

Bluetooth set tools use instruction

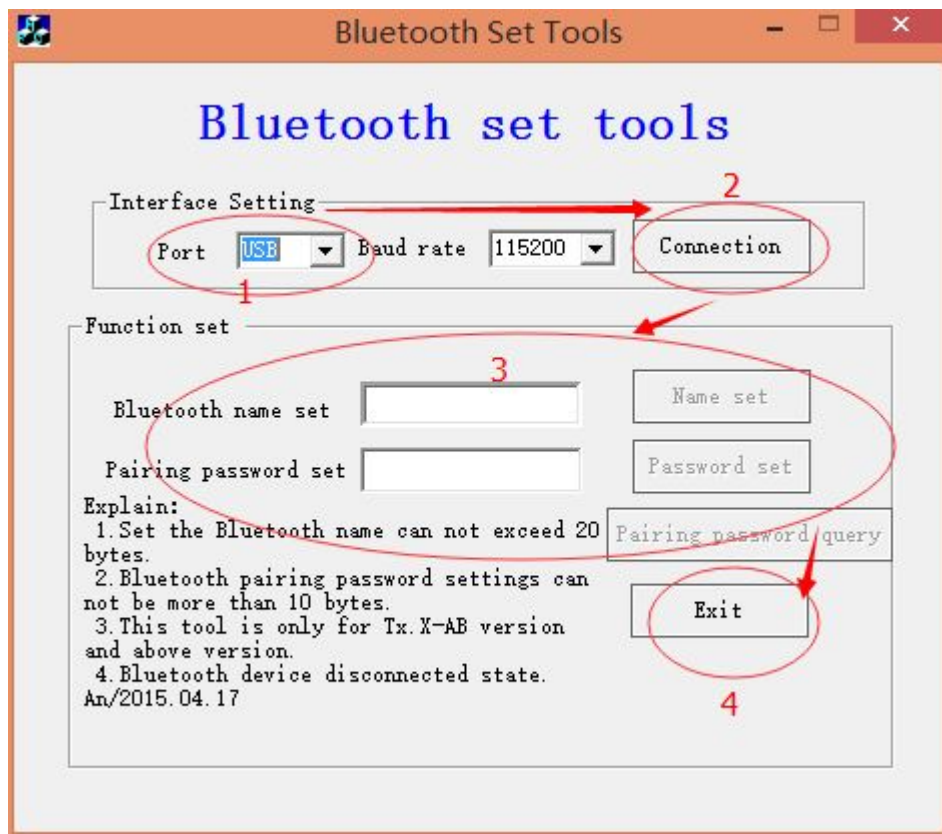
Note:

1. Set the Bluetooth name can not exceed 20 bytes.
2. Bluetooth pairing password settings can not be more than 10 bytes.
3. This tool is only for Tx.X-AB version and above version. (Check the version,you can print Selftest query the printer version)
4. When using this tool to ensure the Bluetooth device in a disconnected state.

This tool can realize our MINI Bluetooth series printer related functions:

- 1.Modify the Bluetooth device name;
- 2.Modify the Bluetooth device pairing password;
- 3.Paring password query;

Instructions as shown in figure:



Step 1:

Set port , please choose “USB” , the factory default printer with standard USB cable;

Step 2:

Click “Connection” ;

Step 3:

- ① According to the need to set up the Bluetooth printer name ,enter within the dialog ,determined to set the name ,the Click on the “Name set” ;
- ②According to the need to set up the Bluetooth printer pairing password ,input within the dialog ,confirmed after pairing set password ,please click “set password” ,if you want to query pairing password ,please click “Pairing password query ”

Step 4:

Set after the completion of the click “Exit” window,you can turn off the tool;